

ROSSMOOR LAKES

SITUATE IN SECTION 27, TOWNSHIP 45 SOUTH, RANGE 42 EAST, PALM BEACH COUNTY, FLORIDA
 FEBRUARY 1994 SHEET 5 OF 6

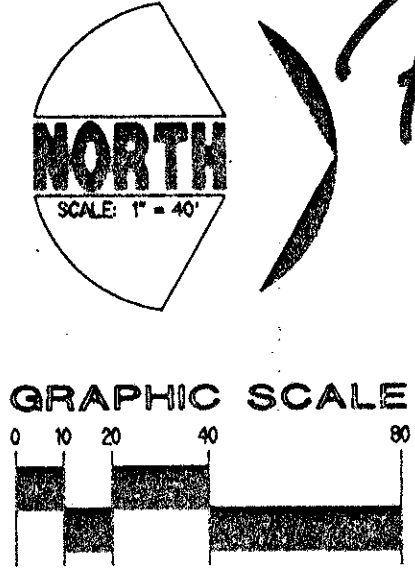
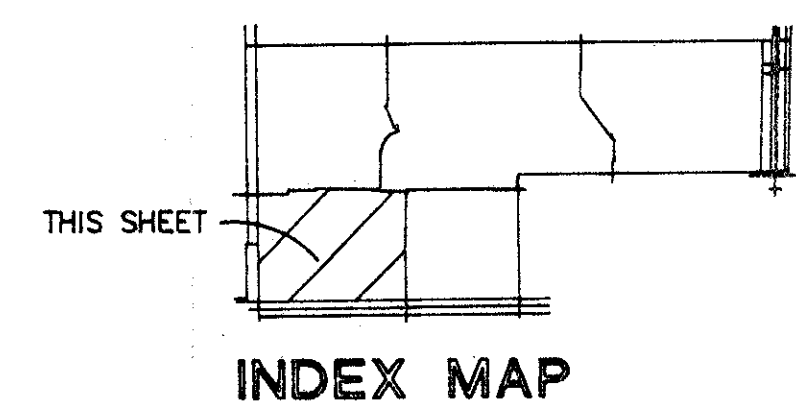
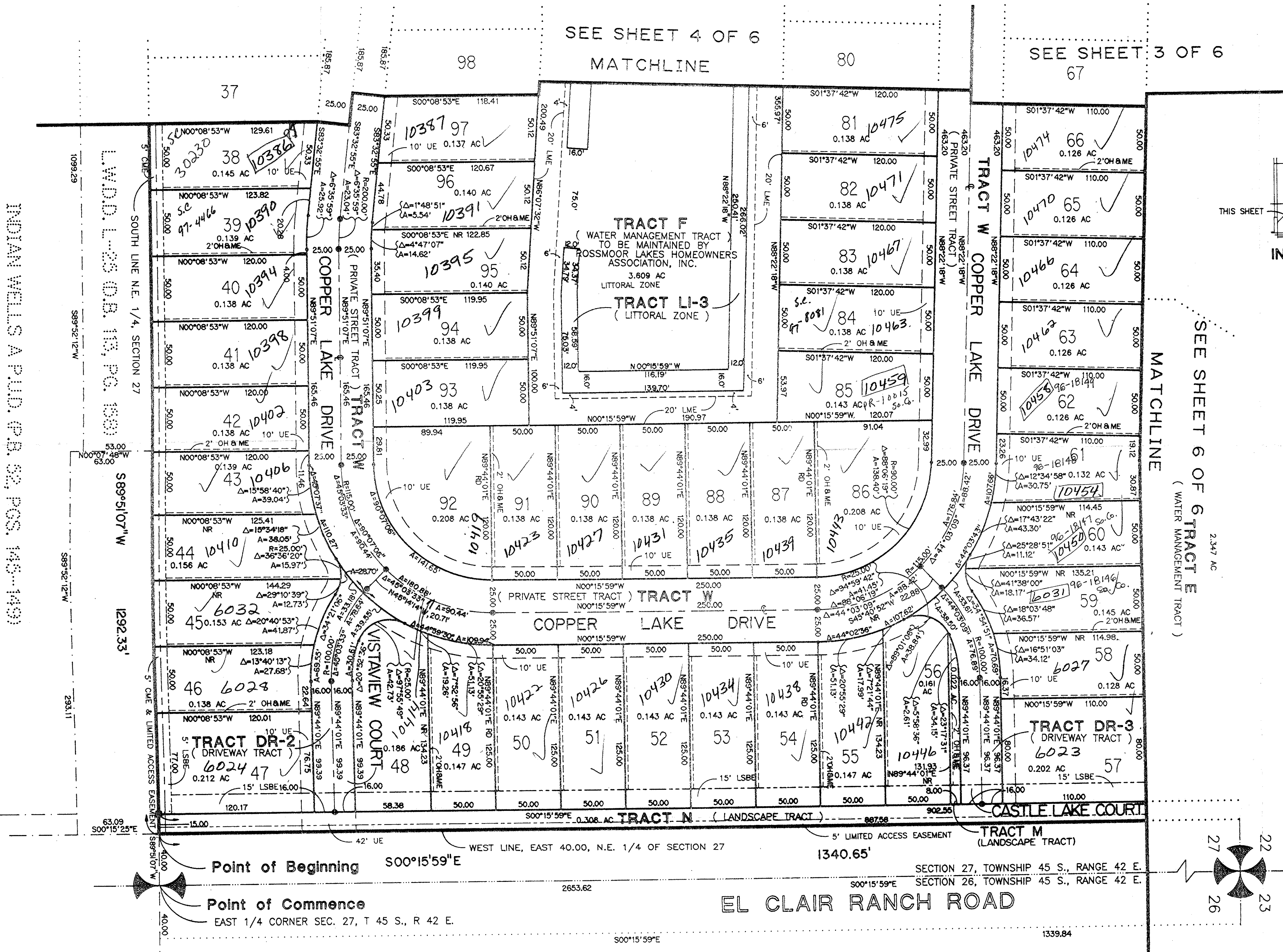
0626001

140

STATE OF FLORIDA }
 COUNTY OF PALM BEACH } SS
 THIS PLAT WAS FILED FOR
 RECORD AT _____ DAY OF
 THIS _____ A.D. 1994 AND
 DULY RECORDED IN PLAT BOOK
 _____ ON PAGES _____ AND
 _____ CIRCUIT COURT.
 BY: _____ DC
 DOROTHY WILKEN, CLERK

SEE SHEET 4 OF 6
 MATCHLINE

SEE SHEET 3 OF 6



PET. 93-34
 5/3/3/K
 ALLOC. #0001
 7/2/95

- LEGEND**
- UE UTILITY EASEMENT
 - OH & ME OVERHANG & MAINTENANCE EASEMENT
 - CME CANAL MAINTENANCE EASEMENT
 - LSEB LANDSCAPE BUFFER EASEMENT
 - LME LAKE MAINTENANCE EASEMENT
 - DE DRAINAGE EASEMENT
 - LWD LAKE NORTH DRAINAGE DISTRICT
 - R RADIAL
 - NR NON-RADIAL
 - RADIUS
 - DELTA
 - ARC
 - CHORD
 - SET PERMANENT CONTROL POINT
 - SET 4" X 4" CONCRETE PERMANENT REFERENCE MONUMENT
 - POINT OF TANGENCY OR POINT CURVATURE (NOT SET)
 - AC ACRES

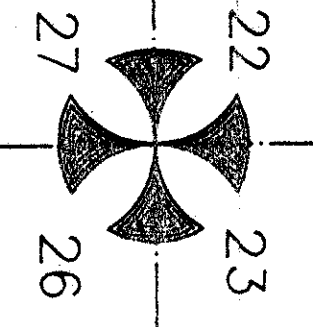
INDIAN WELLS A.P.U.D. (P.B. 52, PGS. 143-149)

TAZ-448

SUBDIVISION * ROSSMOOR LAKES
 BOOK L 3
 FLOOD ZONE 2/1/70 FLOOD MAP # 185A
 QUAD # 35
 ZIP CODE 33463
 DATE 2/15/94

Point of Beginning S00°15'59"E
 Point of Commence EAST 1/4 CORNER SEC. 27, T 45 S., R 42 E.

EL CLAIR RANCH ROAD



0626-001

PALM CHASE LAKES A.P.U.D. (P.B. 57, PGS. 13-21)

ROSSMOOR LAKES 73/140

KESHAVARZ & ASSOCIATES, INC.
 THIS INSTRUMENT WAS PREPARED BY RICHARD P. BREITENBACH
 IN THE OFFICES OF KESHAVARZ & ASSOCIATES, INC.
 280 N. CONGRESS AVENUE, SUITE 206
 WEST PALM BEACH, FLORIDA 33409
 (407) 689-8600 / FAX 689-7476